

# IMC Series Inline - Measuring Cell



## Sensor for online – measurement of

- Moisture
- Solid Content
- Fat
- Density
- Protein
- Concentration

## Inline measuring cell IMC:

as Sensor with

### precision microwave device PMD 2450:

for measuring moisture, solid content, density and consistency and concentration optional with compensation of air bubbles

### multi filter – infrared detector

for measuring fat and protein



## Advantages:

- **exact**  
high selectivity on water
- **inline**  
fits simply into existing pipes with standard flanges further versions on request
- **representative**  
sampling a large percentage of the material by measuring the main stream



# Technical Specifications

## Dimensions for DIN

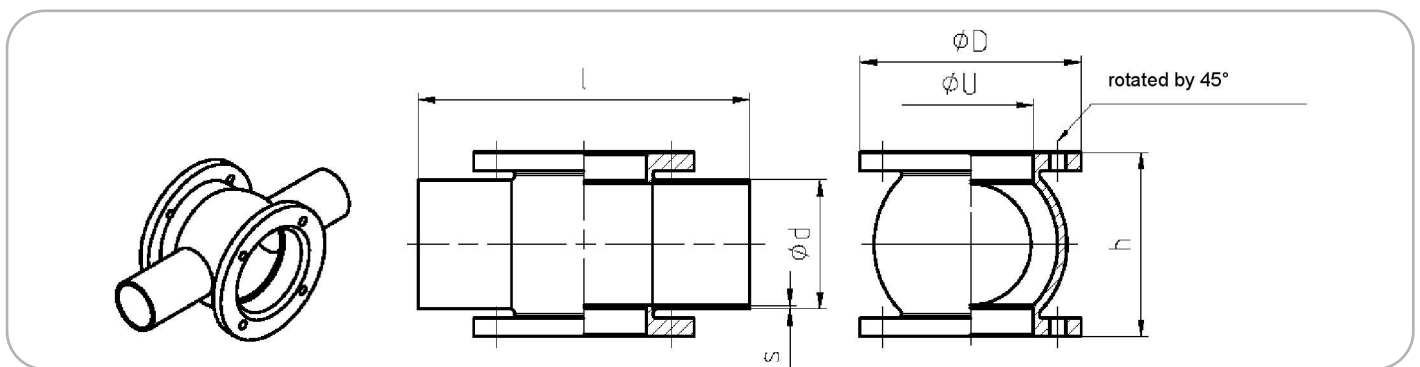
Size	Pipe-Connection DN	d1	s	h	l	D	U
G65	40 DIN	41	1,5	72	180	120	68,1
G65	50 DIN	53	1,5	84	180	120	68,1
G65	65 DIN	70	2	100	200	120	68,1
G65	80 DIN	85	2	115	200	120	68,1
G65	100 DIN	104	2	134	200	120	68,1

## Dimensions for DIN EN

Size	Pipe-Connection DN	d1	s	h	l	D	U
G65	40 ISO	48,3	2	78,3	180	120	68,1
G65	50 ISO	60,3	2	90,3	180	120	68,1
G65	65 ISO	76,1	2,3	105,5	200	120	68,1
G65	80 ISO	88,9	2,3	118,3	200	120	68,1
G65	100 ISO	114,3	2,6	143,7	200	120	68,1

## Dimensions for ASME-BPE

Size	Pipe-Connection DN	d1	s	h	l	D	U
G65	1 1/2	38,1	1,65	68,8	180	120	68,1
G65	2"	50,8	1,65	81,5	180	120	68,1
G65	2 1/2	63,5	1,65	94,2	200	120	68,1
G65	3"	76,2	1,65	106,9	200	120	68,1
G65	4"	101,6	2,11	131,8	200	120	68,1



**INDUTECH GmbH**  
Ahornweg 6 - 8  
D- 72226 Simmersfeld

fon.: + 49 (0) 7484 - 9297 - 0  
fax.: + 49 (0) 7484 - 9297 -33

e-mail: [info@indutech.com](mailto:info@indutech.com)  
internet: [www.indutech.com](http://www.indutech.com)

**Dr. Albert Klein**  
mobil: + 49 (0) 171 431 35 63

representative:

25<sup>02</sup>  
08